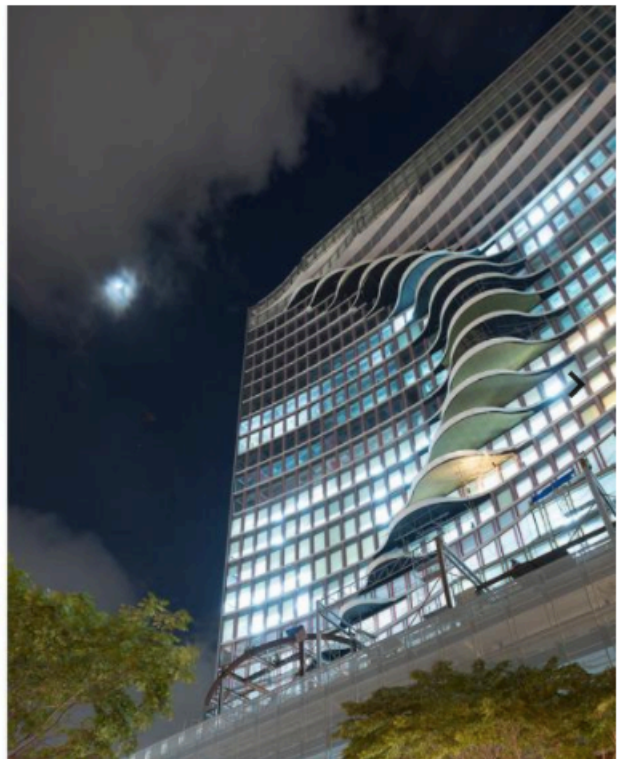
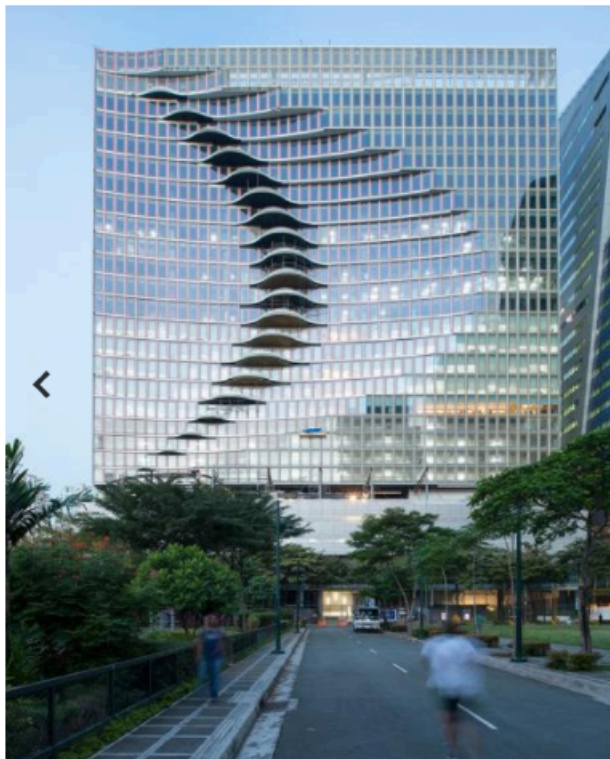


# Wallpaper\*

## Building blocks: striking structures around the globe

ARCHITECTURE / 13 DEC 2016



### Power play

13 December 2016

City Centre Tower, Manila, is the latest work from Brooklyn-based architecture and design firm CAZA. Completed this month, the playful yet powerful building will be the new Filipino HQ for leading tech companies including Google. Experimenting with an asymmetrically undulating curve, the architects pulled out a convex shape into space through designing an elliptical pattern of concentric circles across the horizontal axes of each floor. In response, they imprinted a corresponding concave, which slowly unrolls into the façade like a ripple, disrupting the vertical emphasis.

Meanwhile, the strong cuboid outline of the block allows the building to maintain the same physical impact as the surrounding architecture. The exterior architecture thus informs the interior, resulting in balconies overflowing with green plants, alternative views and shifting office shapes for the corporate floors, diversifying the professional environment. Located in downtown metro Manila, the 27 storey mixed use building includes commercial retail, dining and corporate office space.